

IELTS Listening Practice Test 61

Section 1 – Conversation Between Fred and Mary About a Farewell Party

Questions 1-10

Choose the correct letter, A-C

Whose idea was it to hold the party?

A. Fred's

B. A few close friends

C. Mary's

Example: A

Q. 1

Choose the correct answers A-C and write them next to 1 on your answer sheet

1 How much time do Mary and Fred have to prepare everything for the party?

A About four hours

B Two hours

C About three hours

Q. 2 and 3

Answer the questions. Write NO MORE THAN THREE WORDS for each answer.

2 Where did Fred leave the list of things to do? _____

3 What time did Jim say he would arrive at Fred's house? _____

Q. 4

Choose the correct answers A-C and write them next to 4 on your answer sheet

4 How much wine will Mary buy?

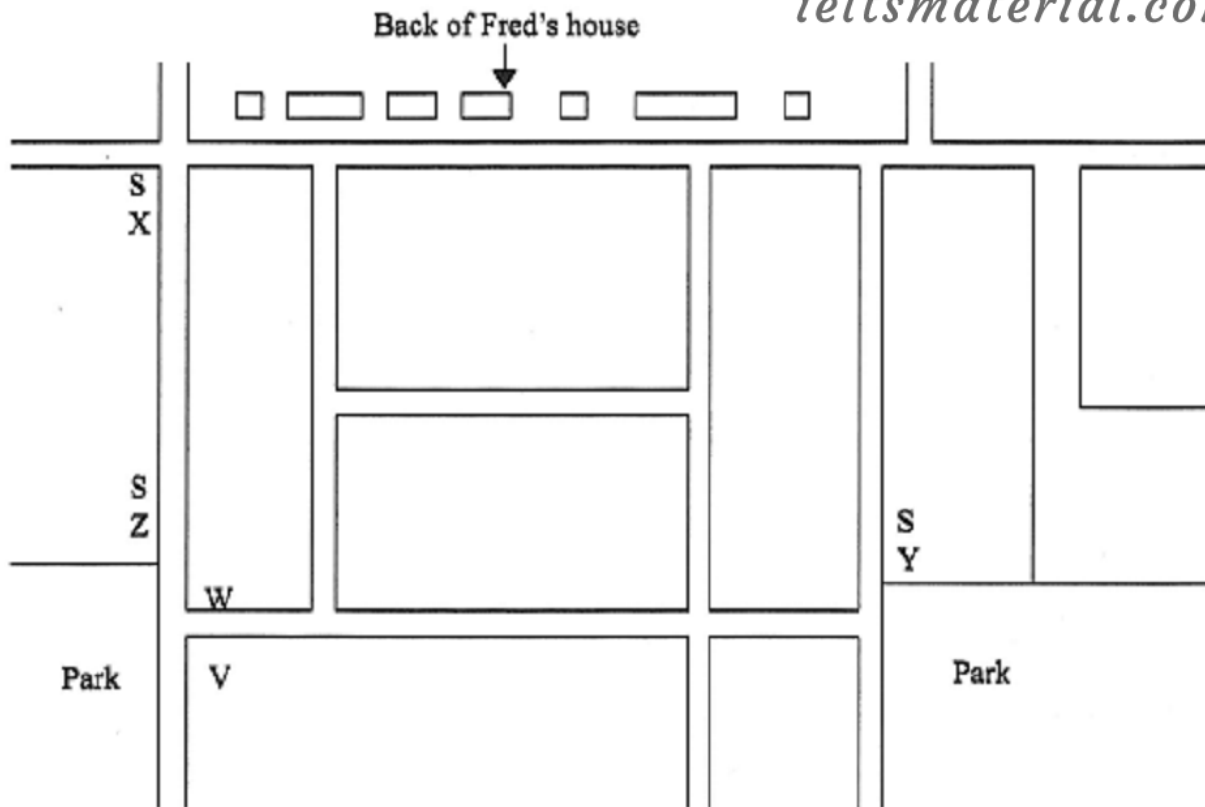
A 15 bottles of red and 15 white

B 15 white and 35 red

C 25 red and 15 white

Q. 5

On the map below, choose the letter representing the liquor store. Note: S means 'supermarket'



Q. 6

Answer the question. Write NO MORE THAN THREE WORDS.

6 Where are the glasses that Sally borrowed? _____

Q. 7 and 8

Choose the correct answers A-E and write them next to 7 -8 on your answer sheet

The meat for the barbecue are flavoured with 7 _____ & 8 _____.

A Salt

B Chilli

C Garlic

D Pepper

E Honey

Q. 9 and 10

Answer the questions. Write NO MORE THAN TWO WORDS for each answer.

9 Apart from French bread, what is another thing that Mary will buy? _____

10 What will she carry it/them in? _____

Section 2 – Brief Introduction of College by Richard

Thomas Who is Head of the Chemistry Department in the
College

Question 11-20

Q. 11-12

Answer the questions. Write NO MORE THAN THREE WORDS AND A NUMBER for each answer.

11 What is the name of the college? _____

12 When was the college founded? _____

Q. 13 and 14

Choose two correct answers A-E and write them next to 13-14 on your answer sheet

Why did the school move out of London?

A The surroundings had become unpleasant

B It was given some cheap land in east England.

- C An English millionaire gave the school 65 million pounds.
- D The Second World War started
- E Sir Gifford Reads gave the school a big sum of money to move.

Q. 15

Answer the following question. Write A NUMBER.

15 What year did the school open in cast England? _____

Question 16

Choose the correct answers A-C and write them next to 16 on your answer sheet

16 In 1858, the school had _____.

- A just female students
- B just male students
- C both male and female students

Question 17-19

Complete the following sentences. Write NO MORE THAN THREE WORDS for each answer.

In fact, the school is very famous for its 17 _____. The 18 _____, used to say, A 19 _____ in a healthy body'

Question 20

Choose the correct answers A-C and write them next to 20 on your answer sheet.

20 What team sports does Mr. Thomas say are played at the school?

- A Rugby, soccer, and American football
- B Basketball and water polo

C Soccer and cricket

Section 3 – Conversation Between 2 Students

Who are Talking About a Survey

Question 21-30

Q. 21

Choose the correct answers A-C and write them next to 21 on your answer sheet.

A John and Ann have both finished writing their survey reports.

B John has finished and Ann has nearly finished.

C Both of them have nearly finished.

Q. 22 and 23

Complete the following sentences. Write ONE WORD OR A NUMBER for each answer.

22 The X axis of John's graph is the _____ variable.

23 John divided his survey population into _____ groups.

Question 24

Choose the correct answers A-C and write them next to 24 on your answer sheet.

24 The relationship between time spent watching TV and reading ability is _____.

A the same for teenagers as it is for people in their fifties

B almost the same for people in their forties as it is for those in their fifties

Every different between teenagers and people in their twenties

Question 25-26

Choose the correct answer and write them next to 25-26 on your answer sheet.

John's survey shows that

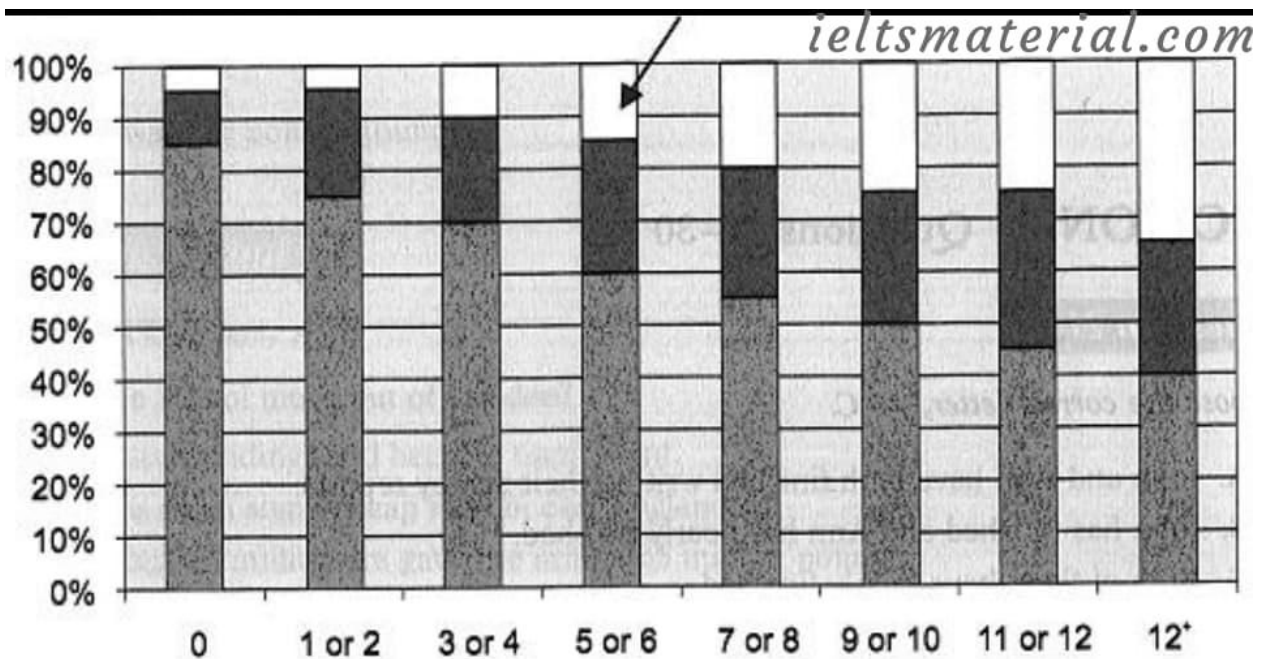
25 people now in their fifties read as much as they used to.

True False Not Given

26 forty and fifty-year-old watch television more than they used to and their reading level have not declined.

True False Not Given

Question 27-30



Complete the following sentences.

Write NO MORE THAN TWO WORDS for each answer.

27 On the above chart, the arrow point the percentage of _____ people.

28 The Y (horizontal) axis is the usual number of _____ meals per _____.

29 Ann ask people about their eating, weight, and _____.

30 Richard weighs 260 kilograms, short, fat and _____.

Section 4 – Lecture on Corporate Crimes

Questions 31-40

Questions 31

Choose the correct answers A-C and write them next to 31 on your answer sheet

31 What types of Corporate crime will the course cover?

A All white-collar crime

B Cases of CEOs bribing government officials without telling their colleagues

C Cases involving corporate culture

Questions 32-36

Write NO MORE THAN TWO WORDS for each answer.

The course will try to identify what corporate criminals share in terms of 32 _____ and 33 _____. An interesting part of corporate crime is the 34 _____ of detection, trial, and punishment. Before it is detected by the 35 _____, it often seems that it goes on for an unreasonable length of time. There is also a 36 _____ that people found guilty of corporate crimes are treated more leniently by the courts.

Question 37

Choose the correct answers A-C and write them next to 37 on your answer sheet

37 In 1980, the Ford Motor Company was put on trial for_____.

A reckless homicide

B tax evasion

C corporate greed

Questions 38-40

Complete the following sentences.

Write NO MORE THAN THREE WORDS for each answer.

38 Companies sometimes exaggerate their profits to increase_____.

39 The Wall Street Journal ran an article saying Enron might have been President Bush's_____.

40 The Bush administration's_____ might have been design to help Enron.